

Strength.
Endurance.
Beauty.



PPG CORAFLO[®] ADS Fluoropolymer and
BRP (Build. Restore. Protect) Urethane Coatings
Color Guide



We protect and beautify the world™



Exceptional protection with brilliant color

Enhance, protect and revitalize the look of your building or structure with *Coraflon* ADS (Air-Dry System) fluoropolymer and BRP (Build. Restore. Protect.) urethane coatings.

Coraflon ADS coatings enhance and revitalize the appearance of your building or metal roof by giving you the color options you need to get the look you want. These coatings meet the AAMA 2605 weatherability and chemical resistance standards set by architectural PVDF finishes.

BRP urethane coatings restore exterior architectural metals and metal roofs in a rich palette of vivid solid colors and metallics.

Coraflon ADS Coatings

Primers

PPG offers *Coraflon* ADS epoxy primers designed for uncoated non-ferrous and ferrous metals as well as KYNAR®-coated, factory-coated and field-coated substrates.

Fluoropolymer Coatings

PPG pioneered the architectural metal coating industry with proven products such as *Coraflon* ADS and DURANAR® fluoropolymer coatings. *Coraflon* ADS coating is a two-component fluoropolymer finish that provides excellent color and chalk resistance.

BRP Coatings

Urethane Coatings

Build. Restore. Protect. These urethane topcoats and clearcoats are recommended for use on properly prepared and primed exterior metal and masonry surfaces where durability is a consideration. BRP urethanes have tremendous color capabilities and low VOCs. Topcoats are available in satin and gloss sheens as well as pearl and metallic finishes, while clearcoats are available in matte, satin and gloss.

Coraflon ADS fluoropolymer coatings

Based on PPG’s proven technologies, you can trust *Coraflon ADS* long-lasting, field-applied coatings. They are optimal for building restoration and large surface applications, and an excellent choice for restoring weathered building panels and accents. These coatings feature low VOCs and therefore can be used in most regions. Their characteristics make them an ideal choice for high-profile architectural applications where long-term aesthetics are desired.

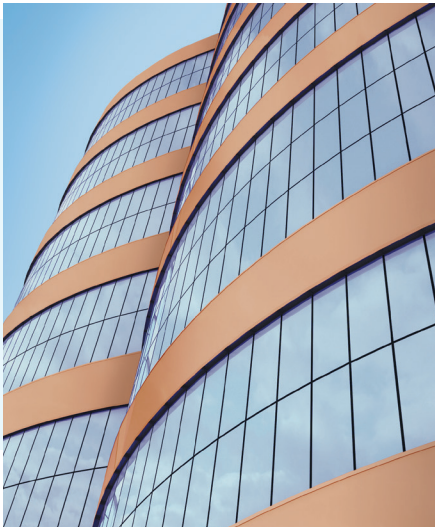
The chemically inert *Coraflon ADS* composition delivers a brilliant, low-maintenance finish that stands the test of time. Its unique formulation enables *Coraflon ADS* coatings to attain a rich palette of solid, mica and metallic finishes while providing exceptional performance in color and gloss retention.

Segments

Building panels and window mullions
Amusement park rides
Stadiums
Transit
Metal roofs and signs
Universities and churches

The PPG benefit

- Exceptional color and gloss retention
- Excellent resistance to chalking, weathering, marring, abrasion and ultra-violet light
- Extends life cycle, which may reduce maintenance costs
- Brush, roller and spray application
- VOC-compliant in most regions
- Easy application
- Available in a wide variety of colors



Performance Properties	Results
Dry Film Thickness (ASTM D1400)	Primer: consult PPG technical service / Topcoat: 1.5-2.2 mil
Gloss @ 60° (ASTM D523)	Standard gloss is 30 and 80
Pencil Hardness (ASTM D3363)	HB – H
Flexibility, T-Bend (ASTM D4145)	3 T-bend; no cracking or pick-off
Adhesion (ASTM D3359)	No adhesion loss
Impact Resistance (ASTM D2794)	No cracking or pick-off
Abrasion, Falling Sand (ASTM D968)	50 liters min.
Detergent Resistance (ASTM D2248 / ASTM D3359)	No adhesion loss
Acid Resistance (ASTM D1308) 10% sulfuric acid – 24 hours (AAMA 2605) 10% nitric acid spot – 15 minutes 10% muriatic acid spot – 15 minutes	No discoloration <5ΔE color change No discoloration
Salt Spray Resistance (ASTM B117) 1,000 hours – steel / 4,000 hours – aluminum	1/8" max. avg. scribe creep; none or few #8 field blisters
Humidity Resistance (ASTM D714, ASTM D2247) 1,500 hours – steel / 4,000 hours – aluminum	1/8" max. avg. scribe creep; none or few #8 field blisters
Exterior Exposure (ASTM D2244, ASTM D4214) 10 years @ 45°, South Florida / Erosion	Max. 5 fade, max. 8 chalk / <10% loss after exposure

BRP urethane coatings

BRP urethane coatings are high-performance, two-component coatings used to restore exterior architectural metals and metal roofs. They provide excellent resistance to chemicals and weathering, good resistance to humidity and salts, and good protection against mar and abrasion. These cross-linked coatings will not discolor or chalk when exposed to ultraviolet light, and provide new life for tired building components at an exceptional value.

The extremely durable coatings offer long-lasting high-chroma color and gloss retention under a wide range of exterior exposures. Matte, satin and gloss sheens are offered along with metallics and special effects that are ideal for building renewal. The film surface is harder than other types of acrylic coatings, which facilitates the washing away of dirt relatively easily. Coatings are easy to apply and can be brushed, rolled or sprayed.

Additionally, a low-VOC urethane (<100 g/L VOC) is available that meets VOC regulations and South Coast Air Quality Management District (SCAQMD) standards nationwide.

Whether it's creating a colorful storefront or matching a vibrant color sample, count on PPG and the BRP urethane line of products to provide you with the high-chroma colors you need.

Segments

Storefronts

Metal roofs

Retail imaging

Storage facilities

Colleges and hospitals

The PPG benefit

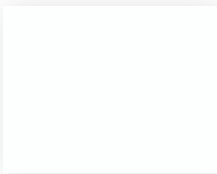
- Very good gloss and color retention
- Resists chemicals, impacts, marring and abrasions
- Dynamic, high-chroma color range
- Topcoats are available in satin and gloss sheens, while clearcoats are available in matte, satin and gloss
- Dirt resistant
- Lower price than *Coraflon* ADS coating
- Excellent adhesion
- Brush, roller and spray application
- Fast drying (three to five hours)



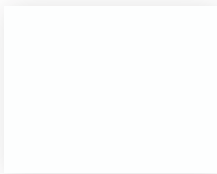
The color chips in this brochure cannot be considered totally accurate color matches, and are not to be used as approved standards. This document contains general information only and should not be construed as creating any warranties, express or implied. Please contact a PPG representative for additional information.

Coraflon, *Duranar*, the PPG Logo and PPG TrueFinish are registered trademarks and *We protect and beautify the world* is a trademark of PPG Industries Ohio, Inc. *Kynar* is a registered trademark of Arkema, Inc. *LEED* is a registered trademark of the U.S. Green Building Council. The *Twitter* Logo is a registered trademark of Twitter, Inc. The *IN* Logo is a registered trademark of LinkedIn Corporation. ©2019 PPG Industries, Inc. All rights reserved. 12/19 TF7000

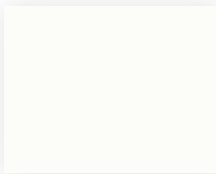
SOLID COLORS



Traffic White
AD3W1161N



White
ADS252403N
BLVS70586
BRP22254



Bone White
ADS225903N
BLVS70343
UC43350



Sandstone
ADS244803N
BLVS70344
UC45392



Pebble Gray
ADS250803N
BLVS70676
BRP22263



Aluminum Gray
ADS230503N
BLVS70409
BRP22253



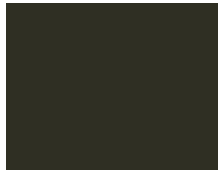
Sandalwood
ADS290703N
BLVS70610
BRP22260



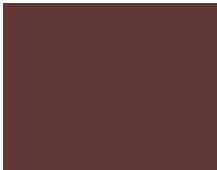
Light Bronze
ADS299703N
BLVS70508
BRP22259



Sage Brown
ADS825103N
BLVS70674
UC45082



Dark Bronze
ADS817703N
BLVS70697
BRP22205



Burnt Crimson
AD3F1213N



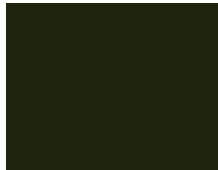
Brick Red
ADS403803N
BLVS70263
BRP22248



Colonial Red
AD3F1207N



Aurora Brown
AD3F1214N



Statuary Brown
ADS802203N
BLVS70510
UC43347



Center Stage
AD3D1344N



Moonbeam Yellow
AD3C1071N



All Star NJ
AD3C1065N



Yellow
AD3C1066N



Colonial Gray
ADS221603N
BLVS70561
BRP22261



Aged Copper
ADS519503N
UC54434



Green
AD3D1355N



Dark Green
ADS542103N
BLVS70307
BRP22245



Hazel Woods
ADS546803N
BLVS70268
BRP22251



Charcoal Gray
ADS222103N
BLVS70495
BRP22258



Clear Sky
AD3E1181N
UC120403XL



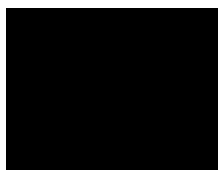
Dynamic Blue
AD3E1292N



Gloss Blue
ADS3E1290N



Electric Blue
AD3E1294N



Black
ADS230103N
BLVS70345
UC51046

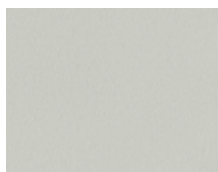
MICA COLORS



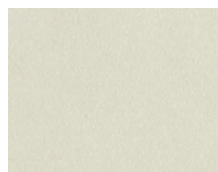
Sterling Silver
ADS176303N
BLVS71629
UC51131XL



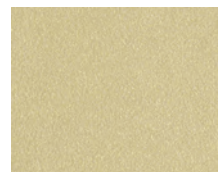
Platinum Mica
AD3Y1390N
UC106682F



Anodized Aluminum
ADS983303N
BLVS74462
BRP22280



Washington White
AD3Y2039N
UC70129BC



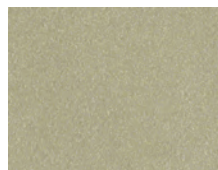
Earthen Gold
ADS194803N
BLVS70767
BRP22256



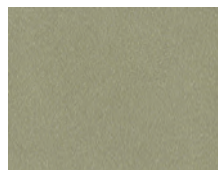
Arcadia Silver
ADS915003N
BLVS74467
UC70123F



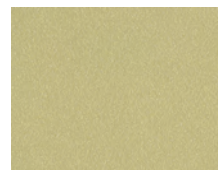
Silver
ADS950103N
BLVS69398
UC117009F



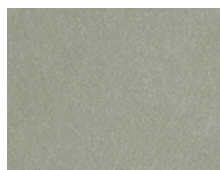
Suede Mica
AD3Y1496N
UC106666F



Champagne
ADS184603N
BLVS70800
BRP22264



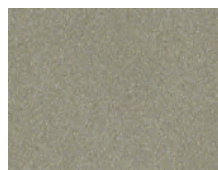
Gold Watch
ADS180903N
BLVS70810
UC99388F



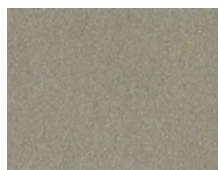
Champagne Gold
ADS937903N
BLVS74460
BRP22278



Titanium
ADS172103N
BLVS74459
BRP22277



Autumn Wood Metallic
AD3Y1611N
UC10671LB



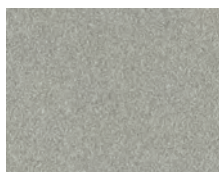
Harvest Gold Pearl
AD3Y3N
UC106690F



Medium Bronze
ADS965103N
BLVS69048
BRP22266



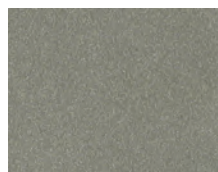
Silversmith
ADS946003N
BLVS68756
UC70092F



Silver
ADS171503N
UC106684F



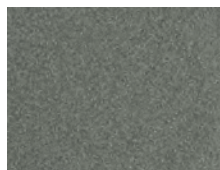
Silver Gray
ADS950903N
BLVS73619
BRP22269



English Pewter
ADS957203N
BLVS74463
UC51713XL



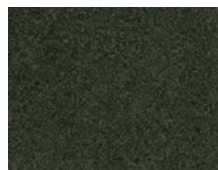
Pewter
ADS964703N
BLVS70490
UC106766F



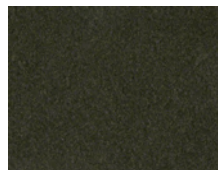
Gray Velvet
ADS936603N
BRP22475
UC70214F



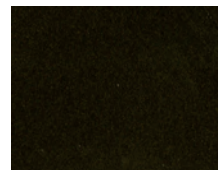
Medium Gray
ADS990703N
BLVS73620
UC102662F



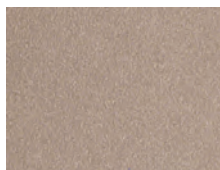
Cosmic Gray
ADS194603N
BLVS71035
UC106685



Vintage Bronze
ADS180803N
BLVS69049
UC120641F



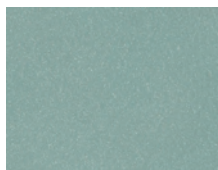
Dark Briar Mica
AD3Y2126N
UC106694F



Rose Pearl
AD3Y2027N



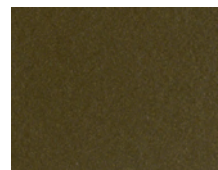
Copper Penny
AD3Y1336N
UC116193F



Aqua
AD3Y1625N



Blue Mica
AD3Y2237N
UC132329



Lexus Bronze
AD3Y1296N
BLVS97601
UC106698F

BRP COLORS



Rose Magenta
MP25248



Bubblegum
MP29315



Palermo Purple
MP70552



Very Violet
MP25502



Deep Purple
MP25550



Bayou Blue
MP25771



Quay Blue
MP25866



Electrical Blue
MP24100



Lite Blue
MP25465



Blue
MP70549



Granny Smith
MP28434



Sea Green
MP58098



Tropic Turquoise
MP29439



Green
MP70116



Forest Green
MP55690



Citrus Yellow
MP10211



Sundance Yellow
MP10210



Yellow Corn
MP28240



School Bus Yellow
MP55149



Moline Orange
MP70551



Roasted Red Pepper
MP69079



Rally Red
MP24846



Crimson Red
MP23966



Airway Orange
MP72268



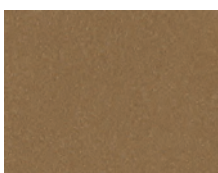
Orange Dust
MP59024



Brilliant Gold
MP30133



Tucson Gold
MP21606



Aztec Gold
MP30134



Cinnagold Dust
MP74752



Copper
MP24161

METALLIC COLORS



Bright Silver
AD3Z1149XN
UC127298



Silver Metallic
AD3Z1161XN



Bright Silver
AD3Z1071XN
UC57638XL



Bright Silver
AD3Z1136XN



Silver
AD3Z1112XN
UC82989XL



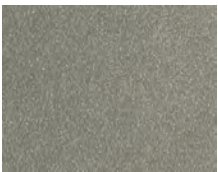
Sunrise Silver
AD3Z1159XN



Sterling Gray
AD3Z1154XN



Champagne
AD3Z1077XN



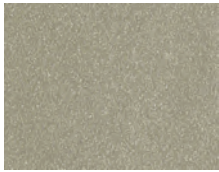
Silver Metallic
AD3Z1126XN



Star Spangled
AD3Z1119XN



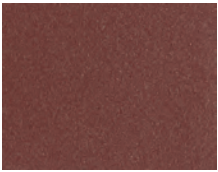
Gold Watch
AD3Z1066XN



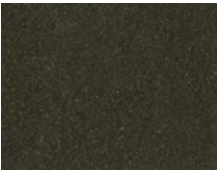
Southwest Gold
AD3Z1173XN
UC110762XL



Bronze Metallic
AD3Z1110XN

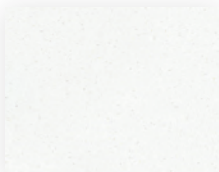


Metallic Red
AD3Z1187XN



Dark Briar
AD3Z1064XN
BLVS76666

SPECIALTY COLORS



Traffic White
with Mica Clear Coat
AD3W1161MN



Black
with Mica Clear Coat
ADS230103MN



BRP Matte (Clear)
Fire Engine Red
MP18644



BRP Satin (Clear)
Fire Engine Red
MP18644



BRP Gloss (Clear)
Fire Engine Red
MP18644

LEGEND

- AD *Corafon ADS Fluoropolymer Coating*
- BLVS *BRP Low-VOC Urethane Coating*
- BRP or MP *BRP Urethane Coating*
- UC *Duranar Fluoropolymer Coating*

GLOSS LEVELS



*Corafon ADS Satin
Red
AD3F1087N*



*Corafon ADS Gloss
Red
AD8F1087N*